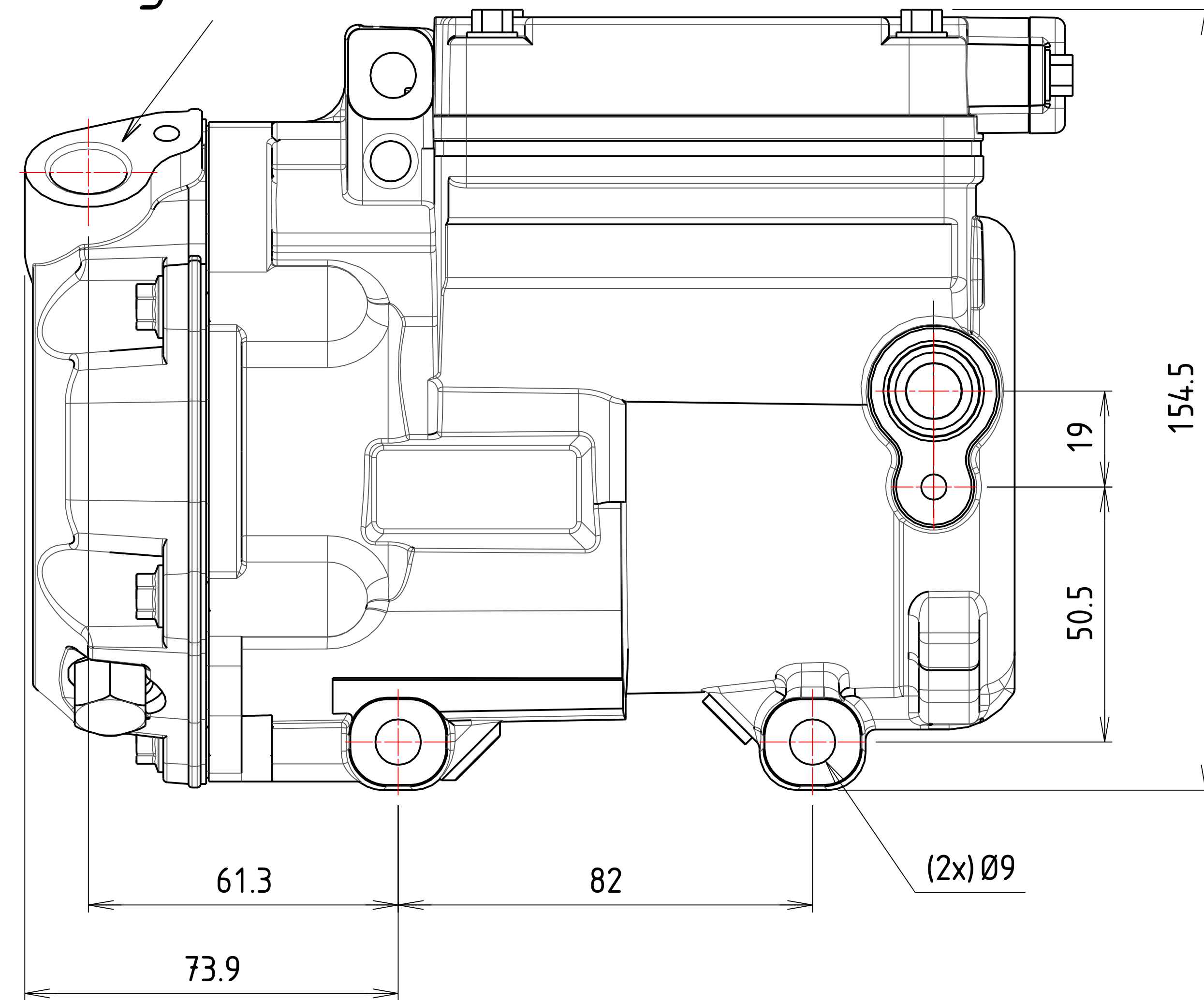
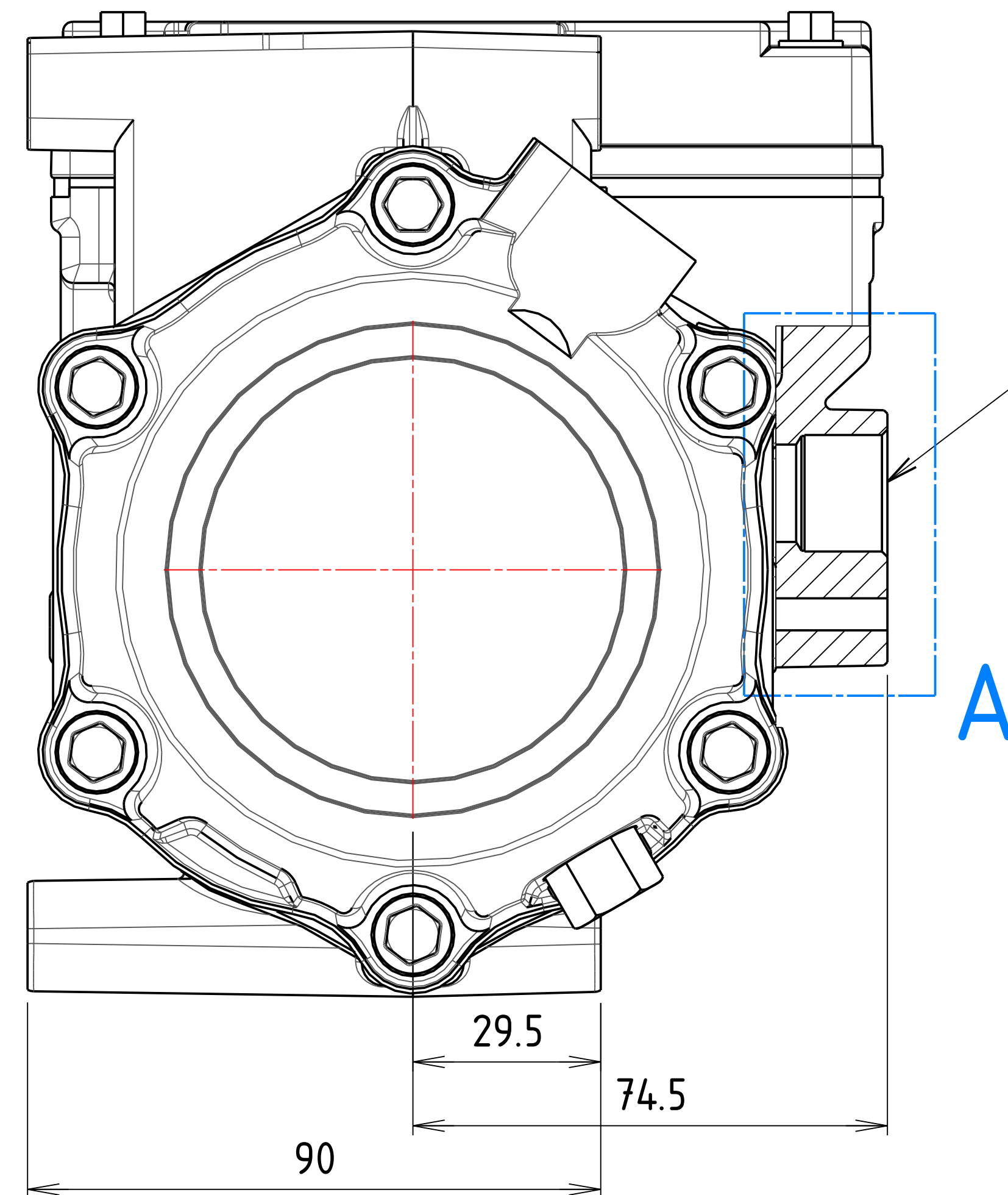


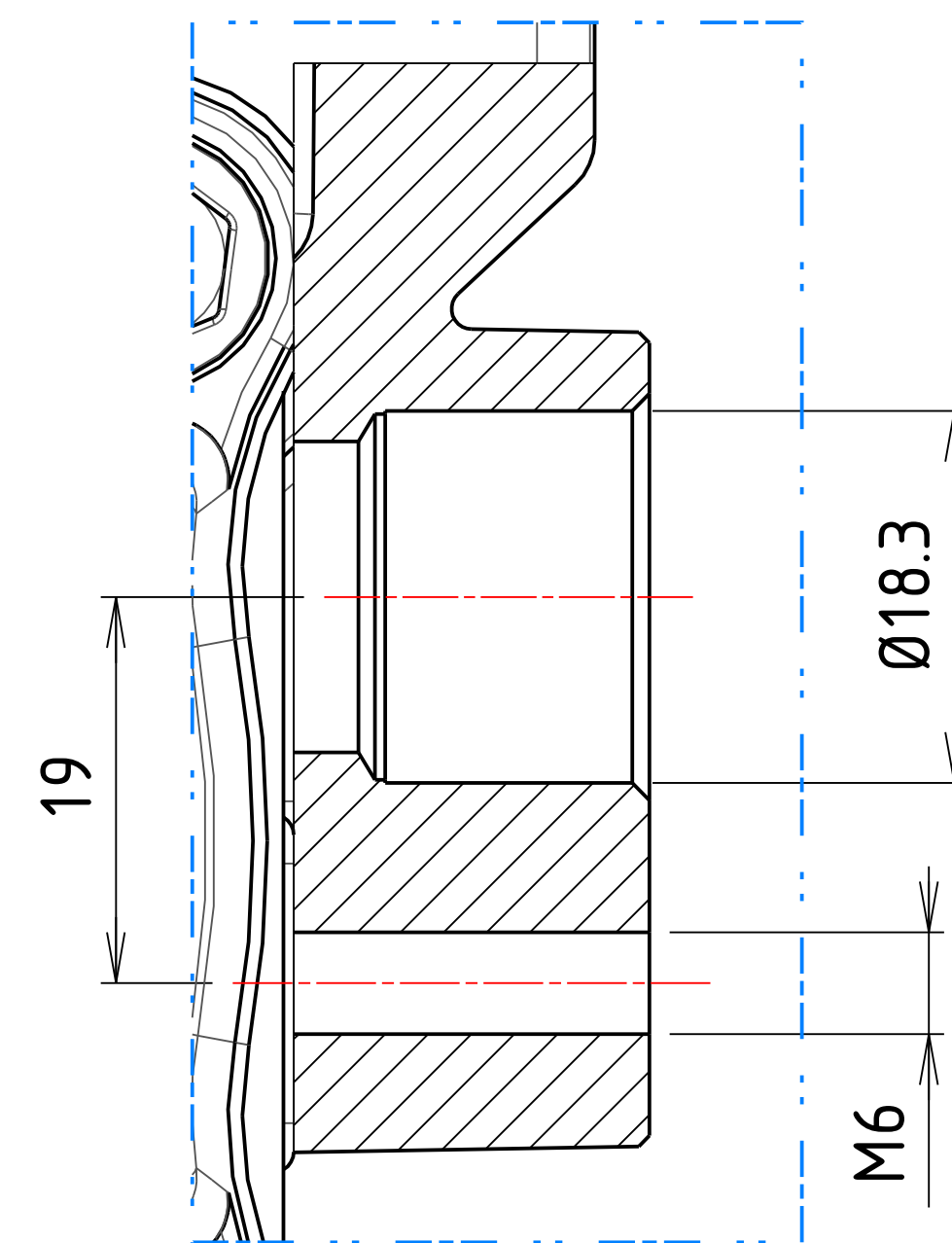
Discharge



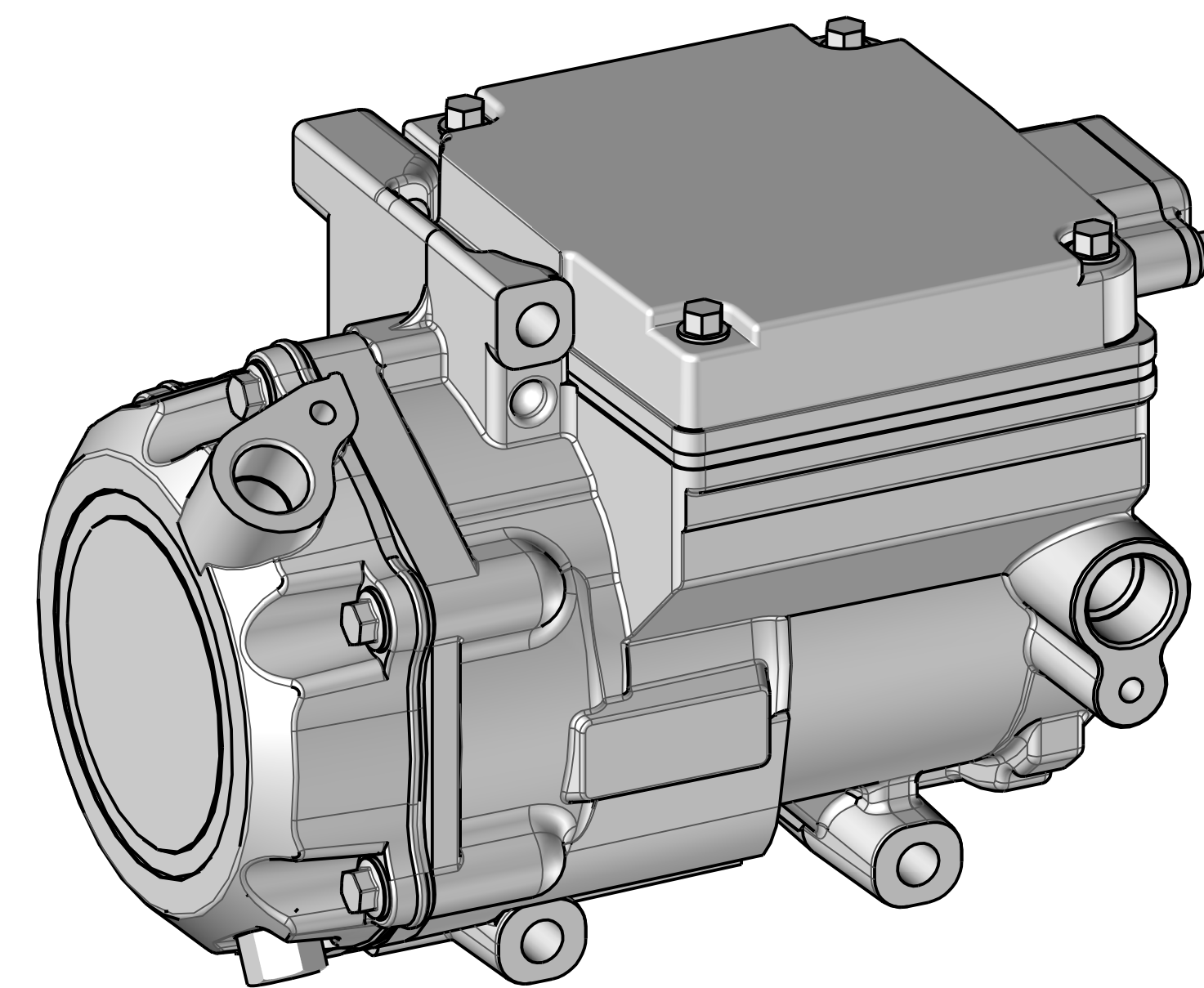
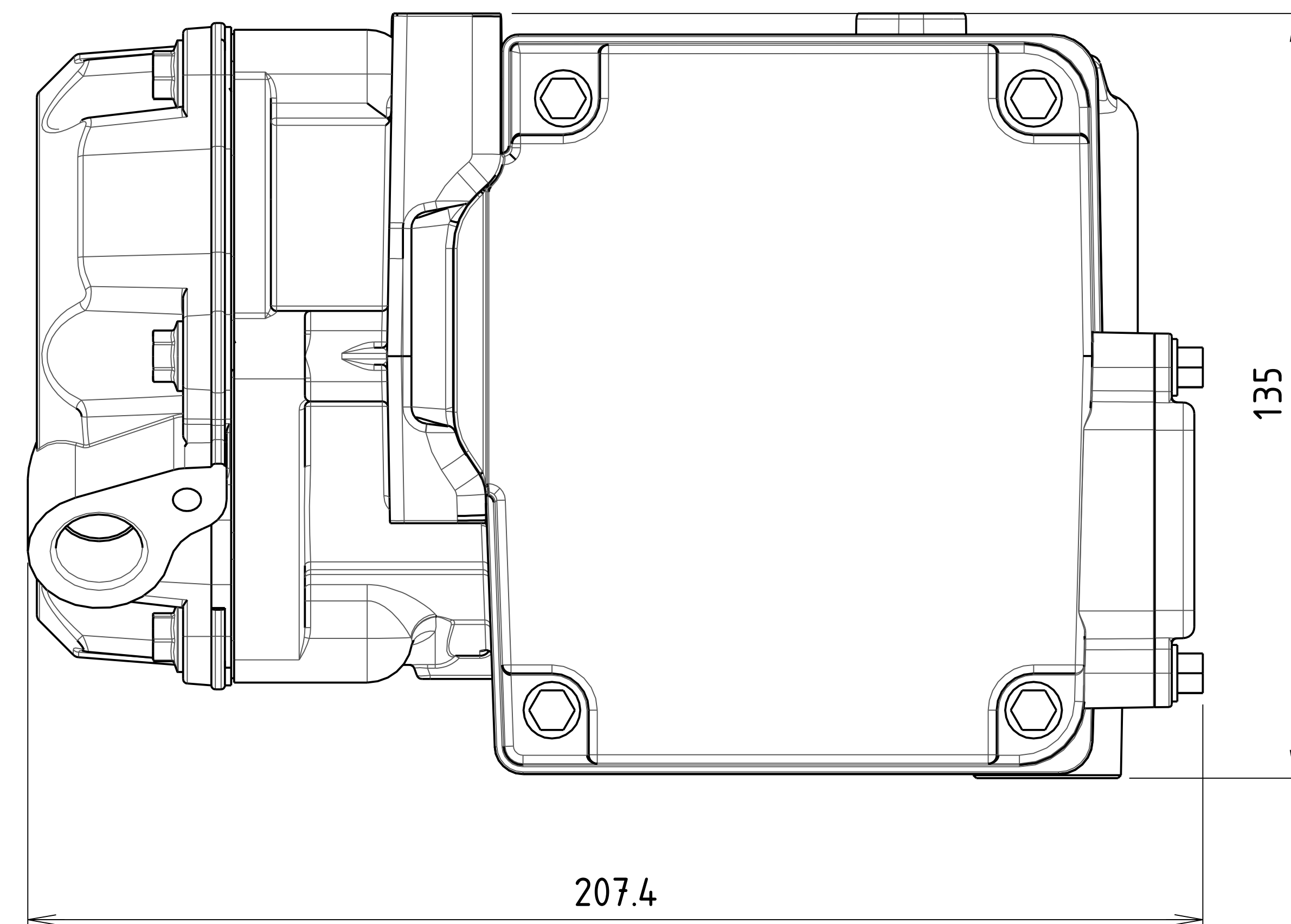
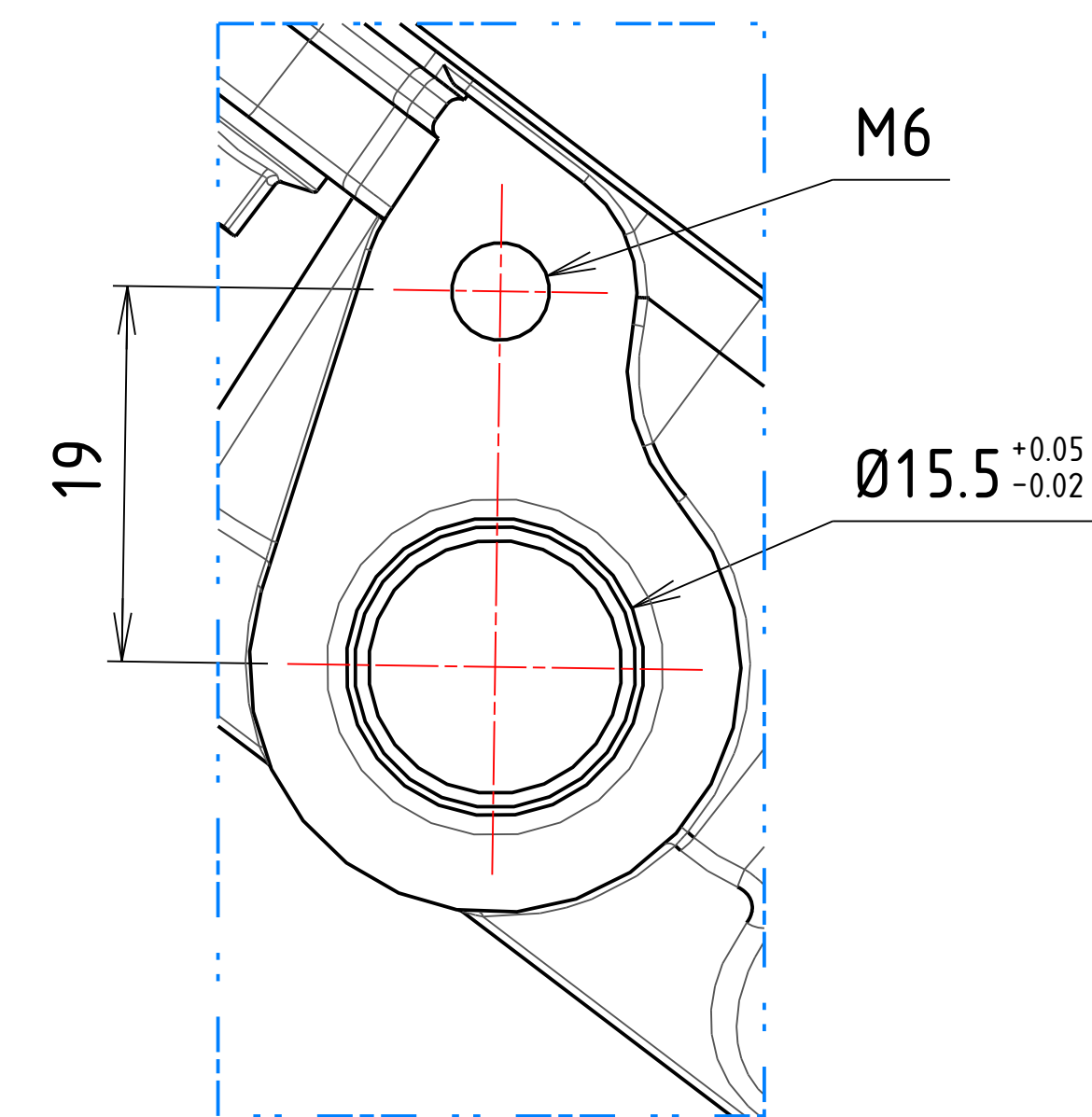
Suction



Suction



Discharge



## Electric connexion

Signal connector - Deutsch DTM04-4P

- 1- 1st gear: 2000 RPM control wire  
2- Common  
3- 3rd gear: 6000 RPM control wire  
4- 2nd gear: 4000 RPM control wire

Power connector - 2x Tabs ring M6

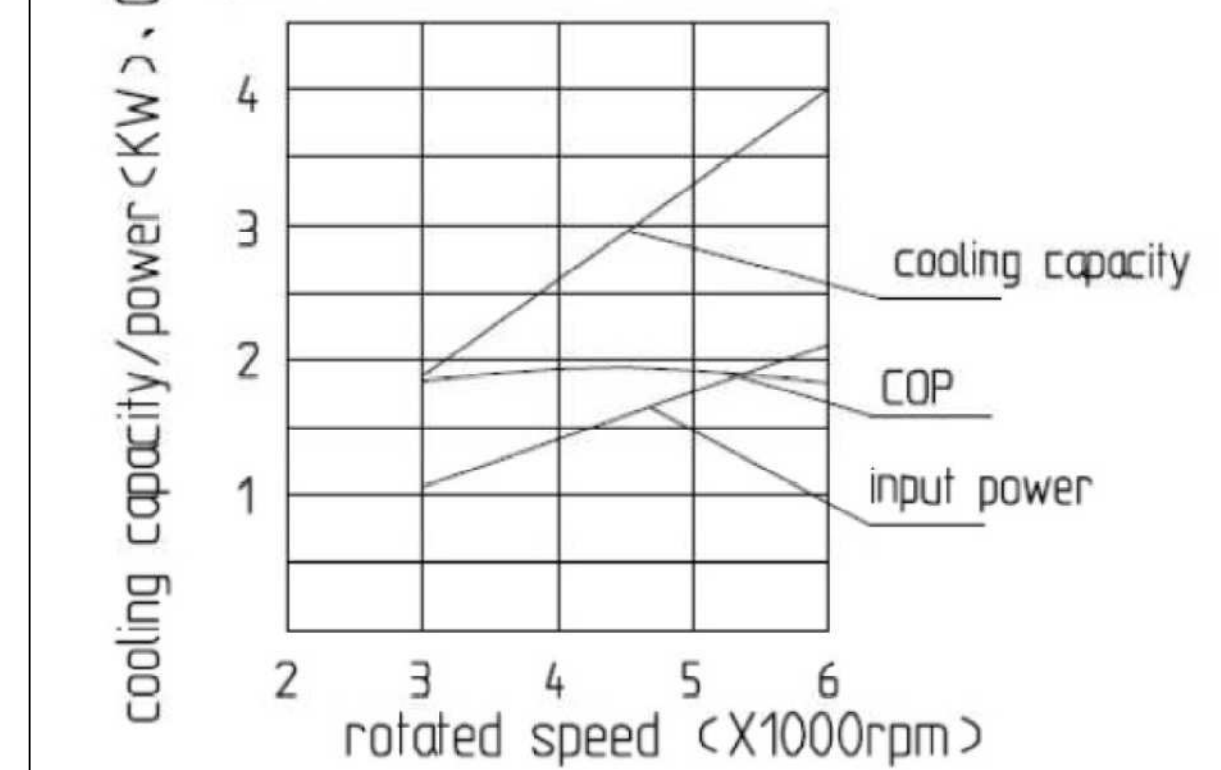
- 1- 24V DC positive pole  
2- 24V DC negative pole

## Compressor parameters

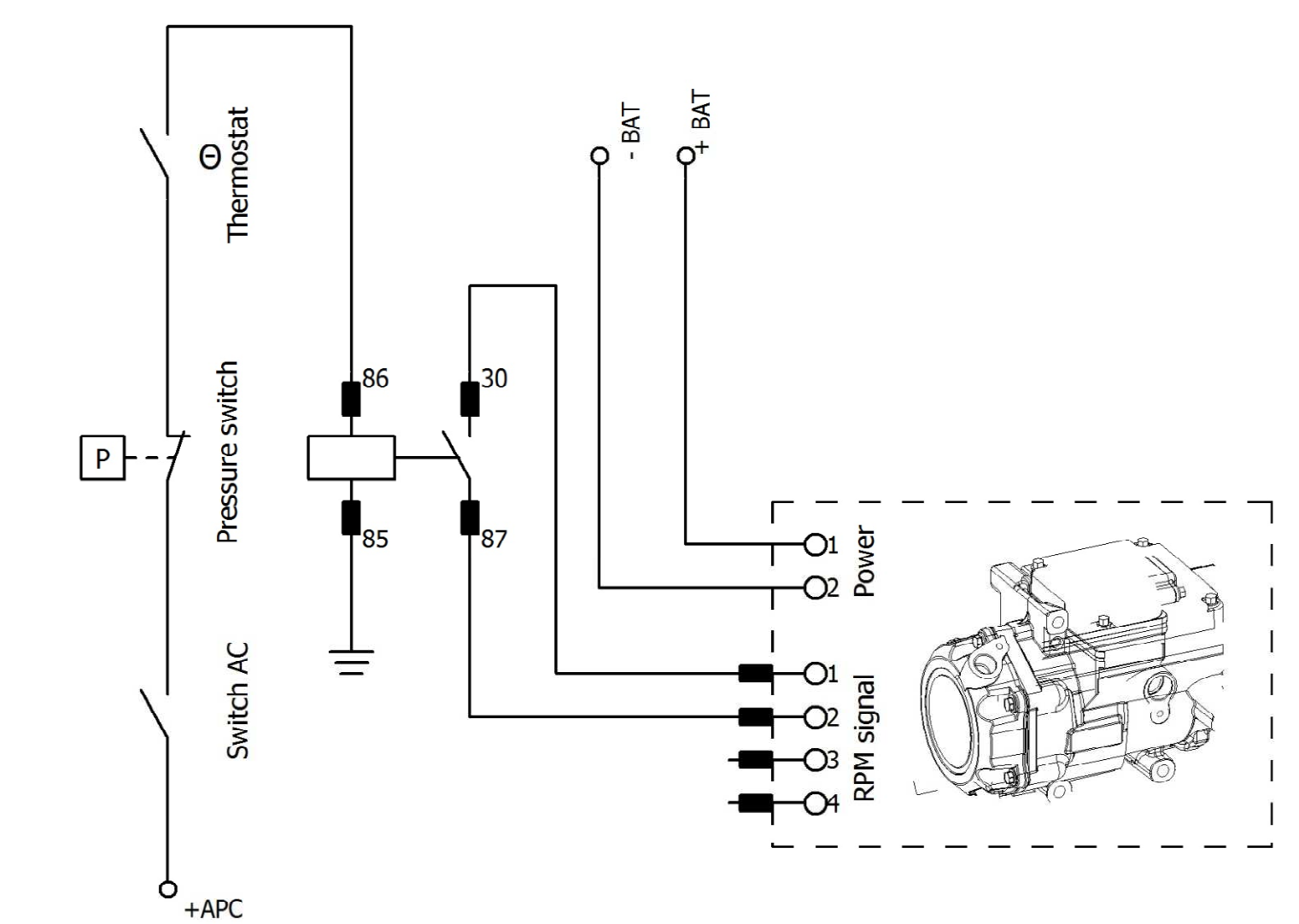
|                |                    |
|----------------|--------------------|
| Oil            | FVC 68D 100ml      |
| Refrigerant    | R134a              |
| Rotation speed | 2000-4000-6000 RPM |
| Voltage range  | DC 20V-31V         |
| Working T°     | -30°C / 100°C      |


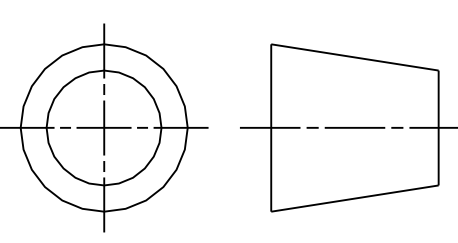
## Compressor performance

Test condition : Ps=0.30MPa(abs) Pd=1.57MPa(abs)  
super heating 10° super cooling 5°  
refrigerant : R134a  
performance curve



## Electric diagram



|   |            |  |                       |
|---|------------|--|-----------------------|
| A   | 06/11/2015 | FFE  | Création              |
| Revision  | Date       | Autor  | Remark                |
| Designation :   |            | Reference :  | Ref project :         |
| Compresseur SH 24cc 24V 4kW + connectique Deutsch   |            | 700.08.321   | -                     |
|    |            | Voie E - Z.I de mariage<br>F - 69330 PUSIGNAN<br>Tél : 04 72 93 10 10<br>Fax : 04 72 93 10 19<br>E-mail : <a href="mailto:kalori@kalori.com">kalori@kalori.com</a> | Format :<br><br>A3    |
| Scale :   |            |   | N° Folio :<br><br>1/1 |
| Ce plan et l'étude s'y rapportant sont la propriété exclusive de KALORI SAS. Toute reproduction totale ou partielle est interdite sans l'autorisation de la société KALORI.<br>This drawing and the study related to it are the exclusive property of Kalori SAS. The reproduction full or partial without the prior consent of Kalori is prohibited. |            |  |                       |